

GSP KING



GSP KING

AHTS VESSEL •

www.gspoffshore.com



GRUP SERVICIIL PETROLIERE
member of UPETROM GROUP

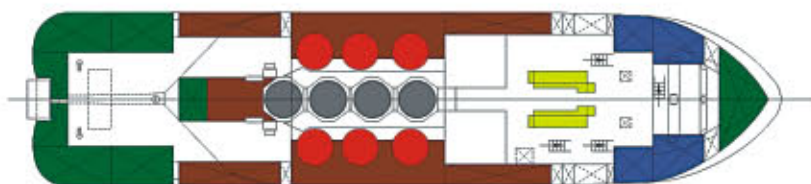


GRUP SERVICII PETROLIERE
member of UPETROM GROUP

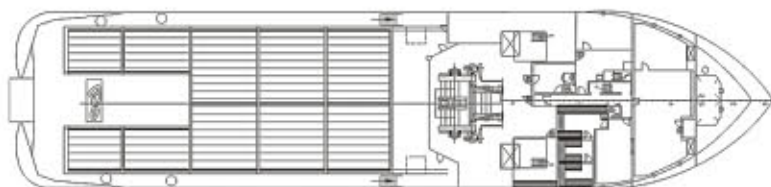
GENERAL



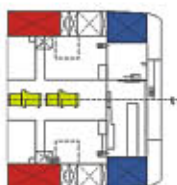
OUTBOARD PROFILE



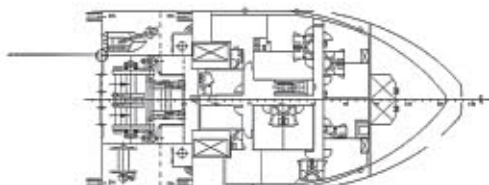
VIEW UNDER MAIN DECK



MAIN DECK



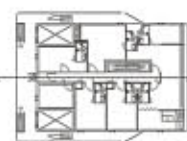
TWEEN DECK



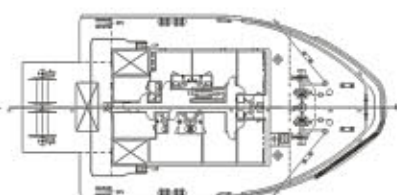
FORECASTLE DECK



BRIDGE DECK



OFFICER DECK



UPPER FORECASTLE DECK

BUILT BY / YEAR

Jaya Shipyard Singapore
2005

FLAG

Gibraltar

TYPE

AHTS

DESIGN

70 m Anchor Handling
Supply Vessel

CLASSIFICATION SOCIETY

ABS

CLASSIFICATION

ABS — A1, Towing Vessel, Fire Fighting
Vessel Class 1, Offshore Support Vessel,
€), AMS, DPS-2

L.O.A. (m)

70

BREADTH (m)

16.80

DEPTH (m)

7.5

MAX. DRAUGHT (m)

6.8

MAX. SPEED

14 knots

NUMBER OF ENGINES & TYPE

2 x Wartsila 8L32

GENERATORS

2 x 410 kW Caterpillar

BOW THRUSTER (s)

2 x Kawasaki

STERN THRUSTER (s)

1 x Kawasaki



TECHNICAL DATA

MAIN PARTICULARS

| | |
|------------------|------------|
| L.O.A.: | 70 m |
| LPP: | 66.80 m |
| Breadth Moulded: | 16.8 m |
| Draft: | 6.8 m max. |
| DWT: | 2,000 |
| GRT: | 2,690 |
| Net Tonnage: | 807 |

CARGO CAPACITIES

| | |
|----------------|------------------------|
| Deck Area: | 500 m ² |
| Deck Cargo: | 800 t |
| Deck Load: | 7.5 t / m ² |
| Fuel: | 1,126 cubm |
| Potable Water: | 361.9 cubm |
| Drill Water: | 308.51 cubm |
| Liquid Mud: | 490.32 cubm |
| Dry Bulk: | 226 cubm |

DISCHARGE CAPACITIES

| | |
|-----------------------|------------------------------------------------------------|
| Fuel: | 1 x fo cargo pump 200 cubm / h @ 0 bar |
| Potable Water: | 1 fw cargo pump 120 cubm / h @ 9 bar |
| Drill Water: | 1 x drill / ballast pump 150 / 100 cubm / h @ 9 / 2 bar |
| Liquid Mud: | 2 x liquid mud pump 75 cubm / h @ 24 bar |
| Dry Bulk Compressors: | 2 x 20 cubm / min @ 5.5 bar |

DECK MACHINERY / MOORING

| | |
|-----------------|---------------------------------|
| Tugger Winches: | 2 x 10 t |
| Capstans: | 2 x 10 t |
| Deck Cranes: | 1 x 2.2 t @ 12.2 m |
| Windlass: | 1 x Brattvaag 17 t duty of drum |
| Anchor: | 2 x 2,090 kg, AC 14 |
| Chain: | 918 m x 46 mm, U2 chain |

TOWING / ANCHOR HANDLING EQUIPMENT

| | |
|---------------------------|--------------------------------------------------|
| Winch Type: | Brattvaag, triple drum, waterfall type |
| AHT Winch Pull: | 300 t |
| AHT Winch Break: | 450 t |
| Tow Drum Capacity: | 1,700 m x 76 mm, SWR |
| Tow Line: | 1,300 m x 76 mm |
| Working Drums Capacities: | 1,500 m x 76 mm |
| Storage Drums Capacities: | 1,500 m x 76 mm |
| Spare Tow Line: | 1,300 m x 76 mm |
| AH Triplex Shark Jaws: | 1 x 500 t SWL |
| Towing Pins Triplex: | 1 x 160 t SWL |
| Stern Roller: | 5,000 mm length, 2,500 mm diameter, 450 t SWL |

MACHINERY & PROPULSION

| | |
|---------------|--------------------------------------------------|
| Main Engines: | 2 x 4,000 kW @ 750 rpm, Wartsila 8L32 |
| Aux. Engines: | 2 x 410 kW @ 1,800 rpm, Caterpillar 3408 DITA |

| | |
|----------------------|---------------------------------------------------------------|
| Emergency Generator: | 1 x 60 kW @ 1,800 rpm, Perkins / 1004 TG2 |
| Shaft Generators: | 2 x 2,875 kVA @ 1,750 rpm, ABB |
| Main Propellers: | 2 x Wartsila propulsion, CPP, 4 blades / 4,000 mm diameter |
| Bow Thruster: | 2 x Kawasaki KT -88B3, 10 t thrust |
| Stern Thruster: | 1 x Kawasaki KT -88B3, 10.5 t thrust |
| Rudders: | 2 x Spade |

NAVIGATION & COMMUNICATION EQUIPMENT

| | |
|-------------|--------------------------------------|
| Radars: | 1 x Furuno X-band, 1 x Furuno S-band |
| Main Radio: | GMDSS Furuno |
| Inmarsat C: | Felcom 15 |
| GPS: | 2 x Furuno |
| Autopilot: | Anschutz |
| Gyro: | C-Plath |

PERFORMANCE

| | |
|----------------------|----------------------------------------------------|
| Bollard Pull: | 135.69 tons |
| Max. Speed: | 14 knots |
| Consumption per Day: | 32 t @ fullspeed, 35 t @ towing, 25 t @ sailing |

ACCOMMODATION

| | |
|-----------------|-----------------------------------------------|
| Total Capacity: | 40 persons |
| Cabins: | 10 cabins x 1 person 15 cabins x 2 persons |
| Hospital: | Fully equipped |
| Lounges: | 1 |

CONTINGENCY EQUIPMENT

| | |
|--------------------|-----------------------------------------------------|
| Fast Rescue Craft: | 1 x Narwhal SV -480 type, outboard motor, 40 BHP |
| Fire Fighting: | FI-FI 1, totally 2,400 cubm / h |
| Rescue Zones: | 2, port and starboard |

OTHER INFORMATION

| | |
|-------------|-----------|
| DP2 System: | Kongsberg |
|-------------|-----------|



| | TANK CAPACITIES | | | | | | | | |
|--------------------------------------|----------------------|----------------------|-----------------------|-------------------------|---------------------------|------------------------|---------------|-----------------|----------------------|
| | SG m ³ | FUEL OIL 0,835 | POT WATER 1,000 | DRILL WATER 1,000 | BALLAST WATER 1,025 | LIQUID MUD 2,000 | FOAM 1,000 | DETER. 1,000 | DRY BULK 2,400 |
| FOREPEAK | 232.27 | - | - | - | - | - | - | - | - |
| FW TK1 PS | 78.81 | - | 78.81 | - | - | - | - | - | - |
| FW TK1 SB | 78.81 | - | 78.81 | - | - | - | - | - | - |
| FW TK 2 DB | 49.14 | - | 49.14 | - | - | - | - | - | - |
| FW TK 3 PS | 40.48 | - | 40.48 | - | - | - | - | - | - |
| FW TK 3 SB | 40.48 | - | 40.48 | - | - | - | - | - | - |
| FW TK 4 PS | 37.09 | - | 37.09 | - | - | - | - | - | - |
| FW TK 4 SB | 37.09 | - | 37.09 | - | - | - | - | - | - |
| BW TK 1 PS | 51.01 | - | - | 51.01 | 52.28 | - | - | - | - |
| BW TK 1 SB | 64.91 | - | - | 64.91 | 66.53 | - | - | - | - |
| BW TK 2 PS | 35.1 | - | - | 35.1 | 35.97 | - | - | - | - |
| BW TK 2 SB | 35.1 | - | - | 35.1 | 35.97 | - | - | - | - |
| AFT PEAK PS | 35.19 | - | - | 35.19 | 36.06 | - | - | - | - |
| AFT PEAK SB | 35.19 | - | - | 35.19 | 36.06 | - | - | - | - |
| AFT PEAK C | 52.01 | - | - | 52.01 | 53.31 | - | - | - | - |
| FO TK 1 PS | 80.18 | 66.95 | - | - | - | - | - | - | - |
| FO TK 1 SB | 80.18 | 66.95 | - | - | - | - | - | - | - |
| FO TK 2 PS | 67.91 | 56.7 | - | - | - | - | - | - | - |
| FO TK 2 SB | 68.84 | 57.48 | - | - | - | - | - | - | - |
| FO TK 3 PS | 230.21 | 192.22 | - | - | - | - | - | - | - |
| FO TK 3 SB | 230.21 | 192.22 | - | - | - | - | - | - | - |
| FO TK 4 PS | 31.28 | 26.11 | - | - | - | - | - | - | - |
| FO TK 4 SB | 31.28 | 26.11 | - | - | - | - | - | - | - |
| FO TK 5 PS | 112.5 | 93.93 | - | - | - | - | - | - | - |
| FO TK 5 SB | 112.5 | 93.93 | - | - | - | - | - | - | - |
| FO TK 6 PS | 33.56 | 28.02 | - | - | - | - | - | - | - |
| FO TK 6 SB | 33.56 | 28.02 | - | - | - | - | - | - | - |
| FO TK 7 | 47.87 | 39.97 | - | - | - | - | - | - | - |
| DETERGENT TK | 21.51 | - | - | - | - | - | - | 21.51 | - |
| FOAM TK | 21.51 | - | - | - | - | - | 21.51 | - | - |
| MUD TK 1 PS | 81.6 | - | - | - | - | 163.2 | - | - | - |
| MUDTK 1 SB | 81.6 | - | - | - | - | 163.2 | - | - | - |
| MUD TK 2 PS | 81.6 | - | - | - | - | 163.2 | - | - | - |
| MUD TK 2 SB | 81.6 | - | - | - | - | 163.2 | - | - | - |
| MUD TK 3 PS | 81.96 | - | - | - | - | 163.92 | - | - | - |
| MUD TK 3 SB | 81.96 | - | - | - | - | 163.92 | - | - | - |
| CEMENT TK 1 | 56.5 | - | - | - | - | - | - | - | 135.6 |
| CEMENT TK 2 | 56.5 | - | - | - | - | - | - | - | 135.6 |
| CEMENT TK 3 | 56.5 | - | - | - | - | - | - | - | 135.6 |
| CEMENT TK 4 | 56.5 | - | - | - | - | - | - | - | 135.6 |
| | - | - | - | - | - | - | - | - | - |
| WEIGHT IN TONS | - | 940.59 | 361.9 | 308.51 | 316.18 | 980.64 | 21.51 | 21.51 | 542.4 |
| VOLUME IN M ³ | - | 1,126 | 361.9 | 308.51 | 308.51 | 490.32 | 21.51 | 21.51 | 226 |
| VOLUME IN BARRELS (Dry Bulk in cuft) | - | 7,097 | 2,279 | 1,943.6 | 1,943.6 | 3,089 | 135.51 | 135.51 | 1,423.8 |

All figures shown, are based on tank volume at 100 % filling.



GRUP SERVICII PETROLIERE
member of UPETROM GROUP

Constanta Port, Berth 34, 900900,
Constanta, Romania • office@gspoffshore.com
Tel.: +40 24 155 5255 • Fax: +40 24 155 5257
www.gspoffshore.com