

GSP PHOENIX



GSP PHOENIX

CREW VESSEL •

www.gspoffshore.com

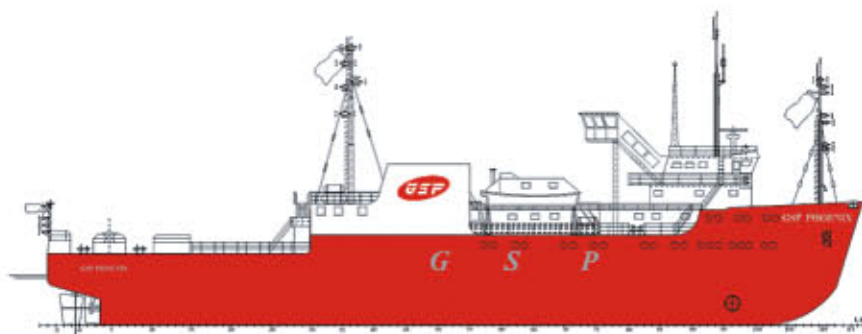


GRUP SERVICII PETROLIERE
member of UPETROM GROUP

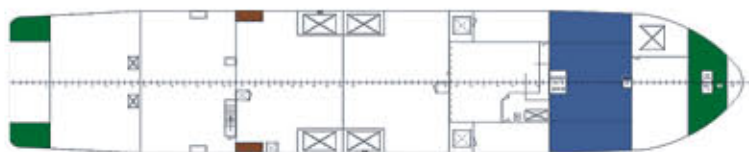


GRUP SERVICII PETROLIERE
member of UPETROM GROUP

GENERAL



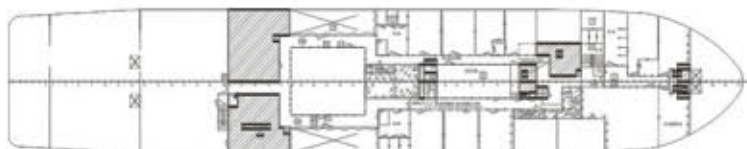
OUTBOARD PROFILE



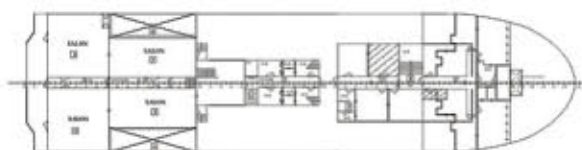
VIEW UNDER MAIN DECK



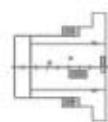
DOUBLE BOTTOM VIEW



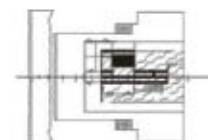
MAIN DECK



DECK BOATS



BRIDGE DECK



FORECASTLE DECK

SHIPYARD / YEAR

Braila Shipyard
1995

FLAG

Malta

TYPE

Passengers
Transportation Vessel

DESIGN

Icepronav Galati

CLASSIFICATION

SOCIETY

BV

CLASS

BV - I • HULL • MACH
Supply Vessel - Tug
Unrestricted Navigation

L.O.A. (m)

73.33

BREADTH (m)

13.6

DEPTH (m)

5.45

MAX. DRAUGHT (m)

4

DEAD WEIGHT (mt)

891

MAX. SPEED

11 knots (app) 10 tons

NUMBER OF ENGINES & TYPE

4 x Caterpillar 3516 B
6VD21 / 5-2X1
D2842 LEX 1

BOW THRUSTER (s)

MCV-H 460 400 kW

TECHNICAL DATA

MAIN PARTICULARS

L.O.A.:	73.33 m
LPP:	67.3 m
Breadth Moulded:	13.6 m
Draft:	4 m
DWT:	891 mt
GRT:	2,033 t
Net Tonnage:	699 t

CARGO CAPACITIES

Fuel:	198.16 cubm
Potable Water:	613.9 cubm

DISCHARGE CAPACITIES

Fuel:	40 t / h – 5 bar
Potable Water:	60 t / h – 5 bar

DECK MACHINERY / MOORING

Anchor Capstans:	10 m / min., 8 / 16 / 16 kW
Capstans:	Electric Capstans 14 m / min., 8 / 16 / 16 kW
Anchor:	2 x 1,900 kg
Chain:	40 mm

MACHINERY & PROPULSION

Main Engines:	2 x Caterpillar 3516 B Diesel Generators – 1,717 kW, 660 V, 50 Hz
Aux. Engines:	1 x D2842 LE 421 kW, 400 V, 50 Hz
Emergency Generator:	1 x 6VD21 / 15 – 2, 380 V, 50 Hz
Converter Generators:	2 x 400 kW, 400 V, 50 Hz
Main Propellers:	2 x FPP in duse
Bow Thruster:	1 x 400 kW
Rudders:	2

NAVIGATION & COMMUNICATION EQUIPMENT

Radars:	KELVIN NUCLEUS / SEATRACK SC 1004
Main Radio:	GMDSS Console
Inmarsat C:	Telex
GPS:	SHIPMATE Rs5800 / KODEN KGP – 913
Autopilot:	Sperry
Gyro:	Sperry

PERFORMANCE

Max. Speed:	12 knots
Consumption per Day:	14 t

ACCOMMODATION

Total Capacity:	112 persons
Passenger Accommodations:	1 x 12 beds cabin, 3 x 4 beds cabin, 3 x 2 beds cabin
Hospital:	1 bed cabin
Lounges:	2 x 52 chairs, 2 x 38 chairs, 1 x 20 chairs, 1 x 40 chairs

CONTINGENCY EQUIPMENT

Helicopter Winching Area:	Space available
---------------------------	-----------------



	TANK CAPACITIES								
	SG m ³	FUEL OIL 0,835	POT WATER 1,000	DRILL WATER 1,000	BALLAST WATER 1,025	LIQUID MUD 2,000	BRINE 2,200	GLYCOL 0,830	DRY BULK 2,400
TK 1.1 FOREPEAK	72.73	-	-	-	74.55	-	-	-	-
TK 1.3 (PS+SB)	76.68	-	-	-	78.60	-	-	-	-
TK 1.4 (PS+SB)	43.16	-	-	-	44.24	-	-	-	-
TK 1.7	26.29	-	-	-	26.95	-	-	-	-
TK 1.2 (PS+SB)	16.94	-	16.94	-	-	-	-	-	-
TK 1.5 (PS+SB)	48.58	-	48.58	-	-	-	-	-	-
TK 1.6 (PS+SB)	50.54	-	50.54	-	-	-	-	-	-
TK 2.1 (PS+SB)	49.84	49.84	-	-	-	-	-	-	-
TK 2.2 (PS+SB)	30.86	30.86	-	-	-	-	-	-	-
TK 2.3 (PS+SB)	68.8	68.8	-	-	-	-	-	-	-
TK 2.4 (PS+SB)	29.36	29.36	-	-	-	-	-	-	-
TK 2.5 (PS+SB)	19.3	19.3	-	-	-	-	-	-	-
TK 4.1 (PS+SB)	79.44	-	79.44	-	-	-	-	-	-
TK 4.2 (PS+SB)	148.96	-	148.96	-	-	-	-	-	-
TK 3.1 (PS+SB)	65.4	-	65.4	-	-	-	-	-	-
TK 3.2 (PS+SB)	44.76	-	44.76	-	-	-	-	-	-
TK 3.3	11.65	-	11.65	-	-	-	-	-	-
TK 3.4	13.85	-	13.85	-	-	-	-	-	-
TK 3.5 (PS+SB)	9.5	-	9.5	-	-	-	-	-	-
TK 3.6 (PS+SB)	43.16	-	43.16	-	-	-	-	-	-
TK 3.7 (PS+SB)	81.12	-	81.12	-	-	-	-	-	-
-	-	-	-	-	-	-	-	-	-
TOTAL M ³	1,030.93	198.16	613.9	-	218.86	-	-	-	-
TOTAL TONS	1,009.69	165.46	613.9	-	224.33	-	-	-	-

All figures shown, are based on tank volume at 100 % filling.



GRUP SERVICII PETROLIERE
member of UPETROM GROUP

Constanta Port, Berth 34, 900900,
Constanta, Romania • office@gspoffshore.com
Tel.: +40 24 155 5255 • Fax: +40 24 155 5257
www.gspoffshore.com