

GSP LICORN



GSP LICORN

PSV VESSEL •

www.gspoffshore.com

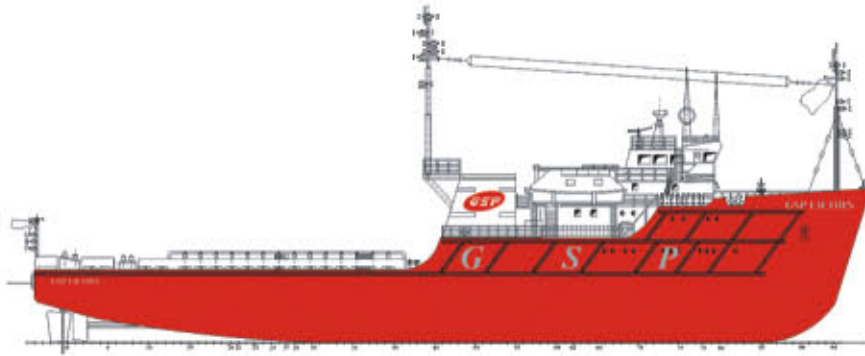


GRUP SERVICII PETROLIERE
member of UPETROM GROUP

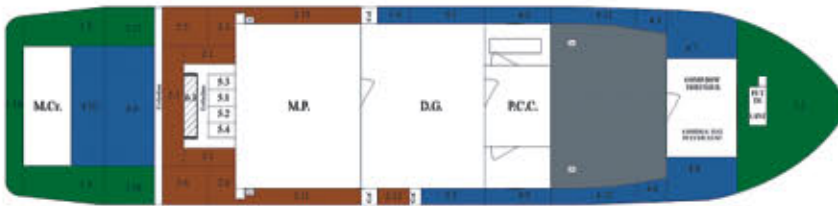


GRUP SERVICII PETROLIERE
member of UPETROM GROUP

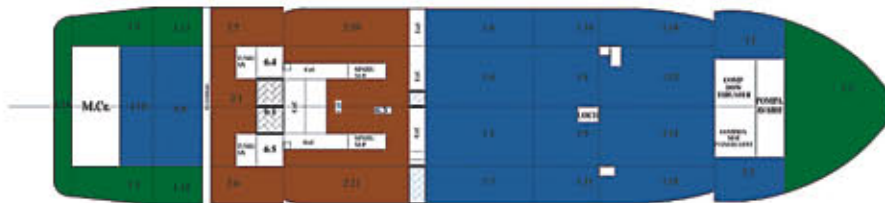
GENERAL



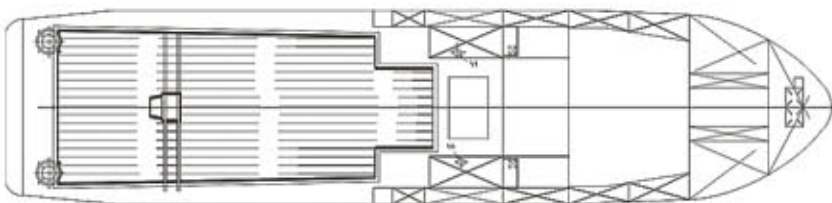
OUTBOARD PROFILE



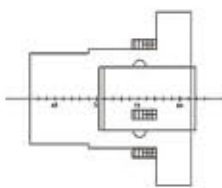
VIEW UNDER MAIN DECK



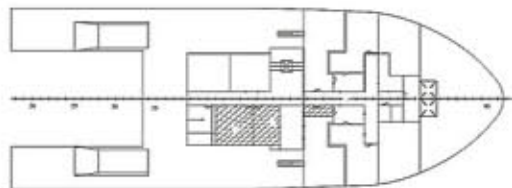
DOUBLE BOTTOM VIEW



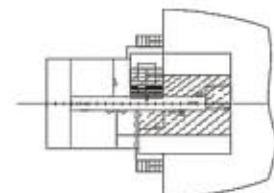
MAIN DECK



BRIDGE DECK



BOAT DECK



FORECASTLE DECK

BUILT BY / YEAR
Braila Shipyard / 1995

FLAG
Malta

TYPE
Supply Vessel

DESIGN
Icepronav Galati

CLASSIFICATION
BV - I • HULL • MACH
Supply Vessel - Tug
Unrestricted Navigation

L.O.A. (m)
60.9

BREADTH (m)
13.6

DEPTH (m)
5.45

MAX. DRAUGHT (m)
4.5

DEAD WEIGHT (mt)
1,090

MAX. SPEED
11 knots (app) 10 tons

NUMBER OF ENGINES & TYPE
2 x 12R251 FMA

GENERATORS
3 X 396 kW type D2842 LE

BOW THRUSTER (s)
FU45LTC - 1225 - 210 kW

TECHNICAL DATA

MAIN PARTICULARS

L.O.A.:	60.9 m
LPP:	56.37 m
Breadth Moulded:	13.6 m
Draft:	4.5 m
DWT:	1,090 mt
GRT:	1,289 t
Net Tonnage:	386 t

CARGO CAPACITIES

Deck Area:	210 m ²
Deck Cargo:	460 mt
Deck Load:	3.4 mt / m ²
Fuel:	281 mt
Potable Water:	361.31 t
Dry Bulk (4 tanks):	60 cubm

DISCHARGE CAPACITIES

Fuel:	40 t / h – 5 bar
Potable Water:	60 t / h – 5 bar
Dry Bulk Compressors:	2 x 45 cubm / h – 3 bar

DECK MACHINERY / MOORING

Tugger Winches:	2 x Anchor Electric Capstans – 10 m / min., 8 / 16 / 16 kW
Capstans:	2 x Electric Capstans 14 m / min., 8 / 16 / 16 kW
Anchors:	2 x 1,700 Hall Anchor
Chain:	2 x 275 m, 38 mm

TOWING / ANCHOR HANDLING EQUIPMENT

Winch Type:	Hydraulic 1 x 70 tf
Tow Line:	1 x 700 m, 64 mm

MACHINERY & PROPULSION

Main Engines:	ALCO Resita, 2 x 2,465 BHP, total 4,800 BHP
Aux. Engines:	DEMP, 3 x 396 kW, 400 V, 50 Hz
Emergency Generator:	1 x 6 V D 21 / 15 – 2 122 kW, 400 V, 50 Hz
Main Propellers:	2 x in Nozzle 4 blade FPP 2,410 mm diameter
Bow Thruster:	1 x 210 kW tunnel
Rudders:	2 x Spade

NAVIGATION & COMMUNICATION EQUIPMENT

Radars:	SEATRACK SC 1204 / SPERRY BM 251 EXBAND GMDSS
Main Radio:	
Inmarsat C:	
E-mail:	FLEET 77

GPS:	PHILIPS NAVIGATOR / FURUNO GP 32
Autopilot:	Sperry
Gyro:	Sperry

PERFORMANCE

Bollard Pull:	36 tf
Max. Speed:	11 knots
Consumption per day:	Sailing 7.5 knots – 7.5 t; Max. Speed 12 knots – 10 t; Towing – 14.5 t; Standby – 5 t

ACCOMMODATION

Total Capacity:	35 persons
Cabins:	3 cabins x 1 person, 10 cabins x 2 persons, 3 cabins x 4 persons
Hospital:	no
Lounges:	1



	TANK CAPACITIES								
	SG m ³	FUEL OIL 0,835	POT WATER 1,000	DRILL WATER 1,000	BALLAST WATER 1,025	LIQUID MUD 2,000	BRINE 2,200	GLYCOL 0,830	DRY BULK 2,400
TK 1.1 FOREPEAK	76.2	-	-	-	-	78.11	-	-	-
TK 1.10 PS	15.4	-	15.4	-	-	-	-	-	-
TK 1.11 SB	15.4	-	15.4	-	-	-	-	-	-
TK 1.12 C-PS	42	-	42	-	-	-	-	-	-
TK 1.13 C-SB	42	-	42	-	-	-	-	-	-
TK 1.14 PS	16.7	-	16.7	-	-	-	-	-	-
TK 1.15 SB	16.7	-	16.7	-	-	-	-	-	-
TK 1.16 AFT PEAK	23	-	-	-	-	23.58	-	-	-
TK 1.17 PS	23.8	-	-	-	-	24.40	-	-	-
TK 1.18 PS	23.8	-	-	-	-	24.40	-	-	-
TK 1.2 PS	33.4	-	-	-	-	34.24	-	-	-
TK 1.3 SB	33.4	-	-	-	-	34.24	-	-	-
TK 1.4 C-PS	44.4	-	44.4	-	-	-	-	-	-
TK 1.5 C-SB	41.7	-	41.7	-	-	-	-	-	-
TK 1.6 PS	34	-	34	-	-	-	-	-	-
TK 1.7 SB	23.4	-	23.4	-	-	-	-	-	-
TK 1.8 C-PS	26.2	-	26.2	-	-	-	-	-	-
TK 1.9 C-SB	27	-	27	-	-	-	-	-	-
TK 2.1 PS	9.8	8,183	-	-	-	-	-	-	-
TK 2.2 SB	9.8	8,183	-	-	-	-	-	-	-
TK 2.3 PS	9.8	8,183	-	-	-	-	-	-	-
TK 2.4 SB	9.8	8,183	-	-	-	-	-	-	-
TK 2.12 SB	6	5,01	-	-	-	-	-	-	-
TK 2.5 PS	39.6	33,066	-	-	-	-	-	-	-
TK 2.6 SB	39.6	33,066	-	-	-	-	-	-	-
TK 2.7 C	55.8	46,593	-	-	-	-	-	-	-
TK 2.8 C-PS	26	21,71	-	-	-	-	-	-	-
TK 2.9 C-SB	23.6	19,706	-	-	-	-	-	-	-
TK 2.10 PS	53.6	44,756	-	-	-	-	-	-	-
TK 2.11 SB	53.6	44,756	-	-	-	-	-	-	-
TK 3.1 PS	27.1	-	27.1	-	-	-	-	-	-
TK 3.2 SB	27.1	-	27.1	-	-	-	-	-	-
TK 4.1 PS	18.3	-	18.3	-	-	-	-	-	-
TK 4.2 SB	18.3	-	18.3	-	-	-	-	-	-
TK 4.3 PS	15.9	-	15.9	-	-	-	-	-	-
TK 4.4 SB	15.9	-	15.9	-	-	-	-	-	-
TK 4.5 PS	15.7	-	15.7	-	-	-	-	-	-
TK 4.6 SB	15.7	-	15.7	-	-	-	-	-	-
TK 4.7 PS	36.7	-	36.7	-	-	-	-	-	-
TK 4.8 SB	36.7	-	36.7	-	-	-	-	-	-
TK 4.9 C-AFT	88.1	-	88.1	-	-	-	-	-	-
TK 4.10 C-AFT	72.9	-	72.9	-	-	-	-	-	-
TK 4.11 PS	13.2	-	13.2	-	-	-	-	-	-
TK 4.12 SB	13.2	-	13.2	-	-	-	-	-	-
TK DRY BULK 4 CILINDERS	60	-	-	-	-	-	-	-	144
-	-	-	-	-	-	-	-	-	-
TOTAL M ³	1,386	-	-	-	-	-	-	-	-
TOTAL MT	-	281,395	759.7	-	-	218.94	-	-	144

All figures shown, are based on tank volume at 100 % filling.



GRUP SERVICIU PETROLIERE

member of UPETROM GROUP

Constanta Port, Berth 34, 900900,
Constanta, Romania • office@gspoffshore.com
Tel.: +40 24 155 5255 • Fax: +40 24 155 5257
www.gspoffshore.com